

Elusive



Wildlife
TECHNOLOGIES, LP

**New
Products
2025**

See our products in action.



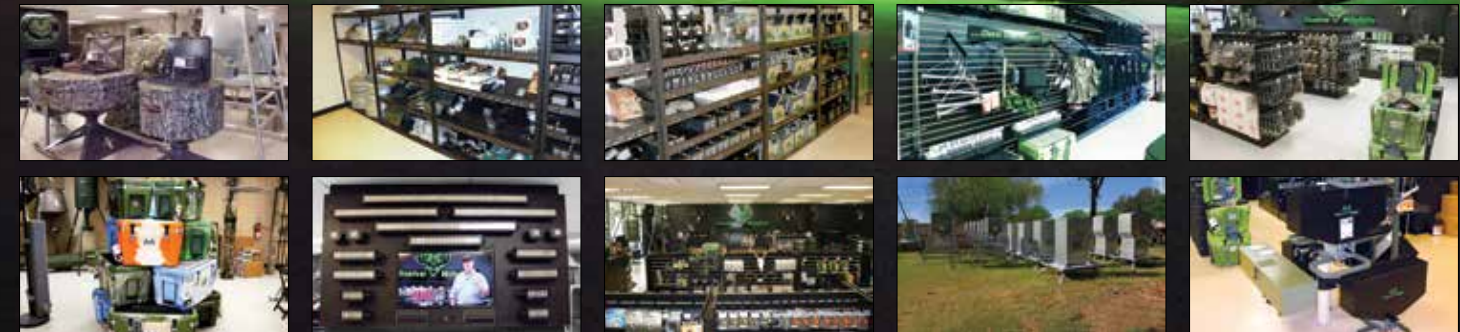
Watch Full Episodes On



Visit our retail location in Conroe, TX



1107 West Dallas St.
Suite A
Conroe, TX 77301
Mon-Fri 9am-6pm
Sat 8am-4pm



800-780-6861



Piglet™ MINI

Rifle & Archery Lights

3 Lights In One Combo Pack - **Green Red White**

- Three Individual Lights: **Green, Red, & White**
- For Use On Rifles, Bows, and Crossbows
- Adjustable Beam
- Threaded Bow Mount w/ Protective Cap
- Silent Wired Switch
- Silent Momentary & On/Off Push Button
- Use Lithium Rechargeable Or Alkaline AA Batteries
- Rechargeable Battery & Battery Charger Included
- Rapid Scope™ Mount Included



Actual Size



Use As A Flashlight



Adjustable Beam



Threaded Bow Mount w/Cap



Mount On Bow Riser



Attach To Stabilizer



Attach To Rifle Scope



Piglet™ MINI

Piglet™ Mini

Whether mounted to a rifle scope, bow stabilizer receiver, or just used as a handheld flashlight, the new Piglet™ Mini is a must-have tool for every gear bag. The Piglet™ Mini comes with three flashlights: green, red, and white. It also comes with the threaded bow mount with silent momentary and on/off button, Rapid Scope™ mount, silent wired pressure switch, rechargeable lithium AA battery, and a single bay battery charger.

Piglet™ Mini - 3 Light Combo Pack.....\$69.99

Additional Rifle Mounts Available:

- Side Rail Mount 1 Inch\$19.99
- Ring Mount Short.....\$12.99
- Ring Mount Tall.....\$12.99
- Velcro Shotgun Mount.....\$9.99

The Kill Light®

The Kill Light® HD4 and HD4X lights are the most innovative long range rifle lights to date. They feature a quick change color selector ring, there is no need to swap the bulb to change the color. Change from White to Red to Green to Infrared with a simple twist. Using the HD4 & HD4X Infrared color is an upgrade to any night vision device. The adjustable beam alleviates the need for different lights for close range and long distance hunters. Both lights operate on multiple different battery sizes, 18650 and 21700. The new Multi-Purpose Dimmer tail cap features a rheostat dimmer, charge indicator light, and a charging port to charge the battery internally if desired. The Ultra-Quiet Multi-Function switch simply plugs into the side of the dimmer tail cap. One tail cap does it all.

XLR HD4
DIMMABLE - ADJUSTABLE BEAM
White
Green
Red
IR-850

XLR HD4X
DIMMABLE - ADJUSTABLE BEAM
White
Green
Red
IR-850



1/4 Turn Zoom Adjustable Beam Width

Patented Design

Color Changing Adjustment Ring
White, Red, Green, IR

1 Inch Body Fits Standard Mounts

Use Multiple Battery Sizes
18650 OR 21700

Charge Level Indicator

Multi-Purpose Locking Dimmer Tail Cap
Plug-In Wired Switches,
Charging Port,
Rheostat Dimmer

Price and Availability Subject to Change



New Features

- 1/4 Turn Zoom Adjustable Beam Width
- Rheostat Dimmer Adjustable Brightness
- Up to 750 yard target illumination
- 1 inch body fits standard mounts
- Powered by one 18650 or 21700 Lithium Rechargeable Battery
- Multi-purpose Dimmer Tail Cap with on/off button and quick-connect plug. No need to change tail caps to add or remove any wired switches.
- Multiple charging options. Charge the battery in the light or wall charger.
- Ultra-Quiet Multi-Function On/Off-Pressure-Dimmer Wired Switch. One switch does it all.



Multi-Purpose Dimmer

- Press and release to turn the light on/off
- Press and short hold to use momentary pressure switch mode
- Rotate to increase or decrease the brightness
- Locking function to prevent accidental activation
- Brightness level memory function
- Quick-connect plug for wired switch and charging
- Charge level indicator light

Change Color With A Twist



Ultra-Quiet Multi-Function On/Off-Pressure-Dimmer Switch



www.ElusiveWildlife.com

800-780-6861

XLR HD Series



XLR HD4X

400-750 Yard Light



XLR HD4

300-500 Yard Light



XLR HD4

The XLR HD4 comes with a ring-to-rail mount, windage & elevation mount, Rapid Scope Mount™, dual-station smart charger with A/C and 12 volt vehicle adapter, 2 pack rechargeable batteries, Multi-Purpose Dimmer tail cap, and Multi-Function quick connect tactical on/off-pressure-dimmer switch. HD4 is a four color light that changes from white to red to green to infrared with the twist of a wrist.

HD4 Gun Kit\$349.99

Additional Batteries Available:

- Tru-Max™ 18650 Batt. 2600 mAh (2 pack).....\$29.99
- Tru-Max™ 18650 Batt. 3500 mAh (2 pack).....\$49.99
- Tru-Max™ 21700 Batt. 5000 mAh (2 pack).....\$54.99

XLR HD4X

The XLR HD4X comes with a ring-to-rail mount, windage & elevation mount, Rapid Scope Mount™, dual-station smart charger with A/C and 12 volt vehicle adapter, 2 pack rechargeable batteries, Multi-Purpose Dimmer tail cap, and Multi-Function quick connect tactical on/off-pressure-dimmer switch. HD4X is a long-range four color light that changes from white to red to green to infrared with the twist of a wrist.

HD4X Gun Kit\$399.99

Additional Batteries Available:

- Tru-Max™ 18650 Batt. 2600 mAh (2 pack).....\$29.99
- Tru-Max™ 18650 Batt. 3500 mAh (2 pack).....\$49.99
- Tru-Max™ 21700 Batt. 5000 mAh (2 pack).....\$54.99

XLR HD4X Spotlight

The XLR HD4X Spotlight Package comes with a Ergo Grip with flip-top ring mount, dual-station smart charger with A/C and 12 volt vehicle adapter, and 2 pack rechargeable batteries. HD4X is a long-range four color light that changes from white to red to green to infrared with the twist of a wrist.

HD4X Spotlight Kit\$349.99

Additional Batteries Available:

- Tru-Max™ 18650 Batt. 2600 mAh (2 pack).....\$29.99
- Tru-Max™ 18650 Batt. 3500 mAh (2 pack).....\$49.99
- Tru-Max™ 21700 Batt. 5000 mAh (2 pack).....\$54.99

BlindSider-X2™ PRO

3-COLOR MOTION FEEDER LIGHT



ANTI-SPOOK TECHNOLOGY

3 Color: Green, Red, Amber

Slowly Brightens

Motion Activated

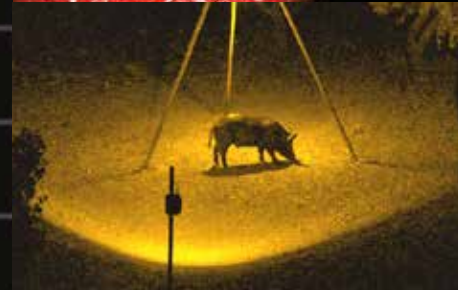
Adjustable Brightness

Up To 65 Feet Of Illumination

Multiple Mounting Options

Multiple Power Options:

- 6 Volt • 9 Volt
- 12 Volt • C Batteries



GREEN RED AMBER



The **Kill** Light™

BlindSider-X2™ PRO

3-COLOR MOTION FEEDER LIGHT

Blind Sider-X2™ PRO

The new Blind Sider-x2™ PRO is smaller, more efficient, and more powerful than ever. It is able to change from Green to Red to Amber with the flip of a switch. It also features the improved ANTI-SPOOK TECHNOLOGY™, the very gradual increase in brightness to decrease the chance of spooking the game. With the ability to run on multiple different power options, adjust between four brightness levels, slowly increase in brightness when motion is detected, five time-duration settings, and optional solar panel the new Blind Sider-X2™ PRO will be a powerful ally in the field this hunting season.

Blind Sider-X2™ PRO\$69.99

Screw-In Tree Mount\$24.99

REAKTOR™ Solar Pack (6v, 9v, 12v, USB)\$49.99

Chew Proof Cable w/Alligator Clips\$19.99

Chew Proof Cable w/Spade Connector\$19.99



**REAKTOR™ Compatible
for Maintenance Free
Operation**

Pro 3 Color MOTION FEEDER LIGHT GREEN RED AMBER



**ANTI-SPOOK
TECHNOLOGY**

**360°
MOTION**

Price and Availability Subject to Change

**3 Color:
Red, Green, Amber**

**Power by:
4 C Batteries, or
REAKTOR™ Solar Panel, or
6 Volt or 12 Volt**

Slowly Brightens

Adjustable Brightness

**Forward Facing
Easy Set Controls**

**Clips, Fasteners, and Strong
Magnetic Mounts Included**

**Metal Shielded Chew Proof
Power Cables Available**

The Pro 3 Color Motion Activated Kill Light® Feeder Light has all the features that you have been asking for. No need to purchase different color lights. Impressively bright, it uses new LED chip technology to produce red, green, and amber color without sacrificing quality or visibility while still remaining extremely difficult for the animals to see.

This light is a perfect fit for every setup, whether a little light is needed or the area needs complete illumination. With Standard 1X, Boost 2X, and Extreme 4X brightness settings, the Pro 3 Color light provides the ideal amount of light every hunter desires.

The Pro 3 Color takes stealth to the next level. It detects motion and slowly increases to full brightness to prevent spooking game. The light can be operated in motion activation mode or in dusk-to-dawn mode.

In the Motion Activation Mode, the light will turn on slowly when motion is detected. The light may be set to remain on for 1, 3, or 10 minutes after motion is detected. It will turn off after the selected amount of time passes once motion is no longer detected. The Pro

3 Color Motion Activated Kill Light® Feeder Light will stay on if the animal stays active under or around the feeder. This helps prevent spooking the game by not cycling the light on and off while they are under the light.

In the Dusk-to-Dawn mode, the light will not use the motion detector, but instead will turn on once the sun goes down and off at sunrise.

The Kill Light® runs on 4 C cell size batteries or can be powered by any 6 volt or 12 volt battery with the included power cord. It may also be powered by the REAKTOR™ Universal Solar Power Pack for maintenance free operation. Built into the light are extremely strong magnets for quick portable attachment to the bottom of a metal feeder or control unit.

Kill Light® Pro 3 Color Motion Feeder Light

Pro 3 Color Motion Light\$69.99

Chew Proof Cable w/Alligator Clips\$19.99

Chew Proof Cable w/Spade Connector\$19.99

REAKTOR™ Solar Pack (6v, 9v, 12v, USB)\$49.99

Price and Availability Subject to Change

Pro 3 Color Head Lamp

GREEN RED WHITE

Color Selector Button

On/Off Button & Rheostat Dimmer Knob

Adjustable Beam Width

Comfortable Headband Adjustments

Up To 10 HOUR Runtime with the Tru-Max™ 21700 Battery

Adjustable Elevation

Utilize Multiple Battery Sizes 18650 & 21700

Quick Detach Power

Quiet Halo Shield



Single Color Head Lamp

Available In 3 Colors RED GREEN or WHITE



On/Off Button & Brightness Selector

Low Battery Notification

Kill Light® Pro 3 Color and Single Color Head Lamps

Both head lamps utilize an adjustable and comfortable head band, a zoom focus adjustable beam, adjustable brightness, and an innovative battery box design that will operate on multiple battery sizes. No need for frequent battery changes or lugging around heavy battery packs. The single color head lamp is available in Red, Green, or White. The three color head lamp will change color from Red to Green to White with the press of a button, and it utilizes a convenient rheostat dimmer knob for precise brightness control.

Pro 3 Color Head Lamp
Pro 3 Color Head Lamp Package\$139.99

Gen 2 Hands Free Head Lamp
Head Lamp (green, red, or white)\$39.99
Head Lamp Package (green, red, or white)\$69.99

TruMax Replacement Batteries
18650 Batt. 2600 mAh (2 pack)\$29.99
18650 Batt. 3500 mAh (2 pack)\$49.99
21700 Batt. 5000 mAh (2 pack)\$54.99



REAKTOR™

Universal Solar Power Pack

- Multi-Voltage: 6 volt, 9 volt, 12 volt, & USB**
- Fits Devices with 4mm & 5.5mm Ports**
- Separate Outputs for All Four Voltages**
- Charge Level Indicator**
- Threaded Mounting Inserts**
- Add More REAKTORs to Add More Power**
- Auxiliary Wall Charger**
- Rugged Weather Proof Construction**
- Optional Metal Shielded Chew Proof Cables**
- Optional T-Post Mount**
- Optional Quick Connect T-Post Mount**

REAKTOR™

Universal Solar Power Pack

The REAKTOR™ Universal Power Pack is a battery pack that is charged by the sun. It can supply primary or backup power to your game camera, feeder light, bait light, battery charger, feeder controller, emergency radio, and many other devices. Its easy to add additional REAKTOR™ power packs together when more power is needed (with optional splitter cables). Multiple standard threaded camera inserts make it easy to add to existing game camera and feeder light setups.

Equipped with 6 volt, 9 volt, 12 volt, and USB 5 volt power, charge level indicator, and auxiliary wall charger, the REAKTOR™ Universal Solar Power Pack is a must have for every gear bag.

REAKTOR™ Solar Pack (6v, 9v, 12v, USB)\$49.99

Replacement Cable A, B, C, D, or E (each) \$4.99

Heavy Duty T-Post Mount\$19.99

Screw-In Tree Mount\$19.99



REAKTOR™ Mounts

The REAKTOR™ T-Post and the Screw-In Tree Mount are great additions to a camera or light setup if you need more mounting options.

Heavy Duty T-Post Mount\$19.99

Screw-In Tree Mount\$19.99



Metal Shielded Chew Proof Cables

REAKTOR™ Standard & Chew Proof Replacement Cables

Replacement cables for the REAKTOR™ are available in both the regular and the metal shielded versions. The regular cables are the same versions that are included with every REAKTOR™. The metal shielded Chew Proof cables are handy for when there is a pesky critter who insists on adding the regular cables to its diet.

Replacement Cable A, B, C, D, or E (each) \$4.99

Chew Proof Cables A, B, or C (5ft).....\$19.99

Outfitter Chew Proof Cable (13ft).....\$19.99

Chew Proof Cable w/Alligator Clips\$19.99

Chew Proof Cable w/Spade Connector\$19.99

The **Kill**Light™

- 100% Solar Powered
- Motion Activated
- Slowly Brightens
- Motion Activated
- All Night Operation
- Available in Green or Red
- 5 Different Power Setting Modes
- Auxiliary Power & Charging Port
- Durable Steel Construction
- Built-In Battery

OUTFITTER™
MOTION ACTIVATED LIGHT



OUTFITTER™



OUTFITTER-R™
with Remote

Outfitter™	\$149.99
Outfitter™ InfraRed	\$169.99
Outfitter™ Replacement Parts	
Chew Proof Cable (13 ft)	\$19.99
Bracket & Hardware Combo	\$19.99
Internal Battery Pack	\$49.99
Motion Sensor Control	\$9.99
Standard Cable (13 ft)	\$14.99

Outfitter-R™	\$199.99
Outfitter-R™ InfraRed	\$219.99
Outfitter™ Replacement Parts	
Chew Proof Cable (13ft)	\$19.99
Bracket & Hardware Combo	\$19.99
Internal Battery Pack	\$49.99
Motion Sensor Control	\$9.99
Standard Cable (13 ft)	\$14.99

Great For:

- Shady Areas
 - Overcast Days
 - Dense Tree Canopy
 - Winter Days
 - Charge Outfitter™ Up To 3X Faster
 - Collect More Sun
- Outfitter™ Boost Panel \$49.99



The **Kill**Light™

The Sportsman™ is completely solar powered for maintenance free all-night illumination. Whether you need a little light all night or you need to light up the night, the motion activated feature will provide the right amount of light when you need it most. Equipped with a newly designed solar panel, five operation modes, power saver to extreme bright the Sportsman™ is the ideal light for any night-time hunting need.



SPORTSMAN™
MOTION ACTIVATED LIGHT



- 100% Solar Powered
- Motion Activated
- All Night Operation
- Available in Green or Red
- 5 Different Power Setting Modes
- Built-In Battery



Sportsman™ Green	\$49.99
HD T-Post Mount	\$19.99
Sportsman™ Replacement Parts	
Internal Battery	\$24.99
Mounting Bracket	\$9.99
Mounting Hardware	\$1.99

Ask About Our Gift Cards



CHARGES 6X FASTER

Kill Light® Deluxe Four-Bay Universal Charger

The Kill Light® Deluxe Four-Bay Universal Charger will charge multiple Li-Ion battery sizes: 21700, 18650, and 26650. Equipped with battery level indicators, AC/DC power adapters, and 1 Amp per bay Rapid Charge (charges 3 times faster), this charger is ideal for those who need a greater charging capacity.

Deluxe 4-Bay Charger \$69.99

CHARGES 6X FASTER

Kill Light® Deluxe Two-Bay Universal Charger

The Kill Light® Deluxe Two-Bay Universal Charger will charge multiple Li-Ion battery sizes: 21700, 18650, and 26650. This charger is equipped with battery level indicators, AC/DC power adapters, and 2 Amps per bay Rapid Charge (charges 6 times faster).

Deluxe 2-Bay Charger \$49.99

Kill Light® Universal Charger

The Kill Light® Universal Charger will charge 16340 and 18650 Li-Ion battery sizes. This charger includes AC/DC power adapters and 300mA per bay trickle charge.

Universal Charger (Wall & Vehicle) \$29.99
Charger & 2-Pack 18650 2600mAh \$49.99



**Tru-Max™
21700
5000mAh**



**Tru-Max™
18650
Platinum
3500mAh**



**Tru-Max™
18650
2600mAh**



**16340
700mAh**

Kill Light® Tru-Max™ & Tru-Max™ Platinum Batteries

The Kill Light® 18650 rechargeable batteries are available in regular TRU-MAX™ 2600mAh capacity and extended runtime Tru-Max™ Platinum 3500mAh capacity. Both are direct replacements for all of our previous 18650 batteries.

Need even more power, the all new Tru-Max™ 21700 battery is available in 5000mAh capacity. The Tru-Max™ 21700 battery pairs perfectly with the all new Kill Light® Single Color & Pro 3 Color Head Lamps, giving up to 10 hours of continuous runtime in the brightest power setting.

Tru-Max™ 18650 2600 mAh (2 pack) \$29.99

Tru-Max™ Platinum 18650 Extended Run
3500 mAh (2 pack) \$49.99

16340 700 mAh (2 pack) \$19.99

Tru-Max™ 21700 5000 mAh (2 pack) \$54.99

REAKTOR™ Solar Pack (6v, 9v, 12v, USB) \$49.99

The Kill Light® Piglet HD™

The new Kill Light® Piglet HD™ light combines the power and versatility of the previous model with an adjustable beam, plug-in wired remote switches, dimmer, and a smaller and lighter body. With the ability to adjust beam width and distance coupled with the power to adjust brightness levels on the touch pad makes the Piglet HD™ light the best choice for those looking for a powerful, yet small, hunting light.



Actual Size



New features include:

- Adjustable beam width and brightness
- Up to 150 yard target illumination
- 1 inch body fits standard mounts
- Powered by one 16340 Lithium Rechargeable Battery
- Multi-purpose tail cap with on/off button and quick-connect plug.
- Whisper Silent Dimmer™ switch
- Charger base is compatible with REAKTOR™ Power Pack



Piglet HD™ Pro Bow Light Kit

The Piglet HD™ Pro Bow Light system comes standard with the Piglet™ bow rail mount, ring mount, dual station smart charger with A/C and 12 volt vehicle adapter, 2 pack rechargeable batteries, USB smart charger, quick connect tactical on/off and pressure switches, Whisper Silent Dimmer™ switch, three dimmable LEDs (green, red, and white), and custom soft sided case perfect for the light and accessories.

Piglet HD™ Pro Bow Light	\$249.99
Extension Tube	\$14.99
18650 Batt. 2600 mAh (2 pack)	\$29.99



Piglet HD™ Pro Rifle Light Kit

The Piglet HD™ Pro Rifle Light Kit comes standard with the ring mount, ring-to-rail scope mount, dual station smart charger with A/C and 12 volt vehicle adapter, 2 pack rechargeable batteries, USB smart charger, quick connect tactical on/off and pressure switches, Whisper Silent Dimmer™ switch, three dimmable LEDs (green, red, and white), and custom soft sided case perfect for the light and accessories.

Piglet HD™ Pro Rifle Light	\$249.99
Compact Magnetic Ring Mount	\$49.99



Piglet HD™ Pro Bow & Rifle Combo Kit

The Piglet HD™ Pro Bow & Rifle Light Kit comes standard with the Piglet™ bow rail mount, ring mount, ring-to-rail scope mount, dual station smart charger with A/C and 12 volt vehicle adapter, 2 pack rechargeable batteries, USB smart charger, quick connect tactical on/off and pressure switches, Whisper Silent Dimmer™ switch, three dimmable LEDs (green, red, and white), and custom soft sided case perfect for the light and accessories.

Piglet HD™ Pro Bow & Rifle Kit	\$279.99
Piglet HD™ IR LED (850nm or 940nm)	\$49.99
Piglet™ Bow Rail w/Damper	\$49.99



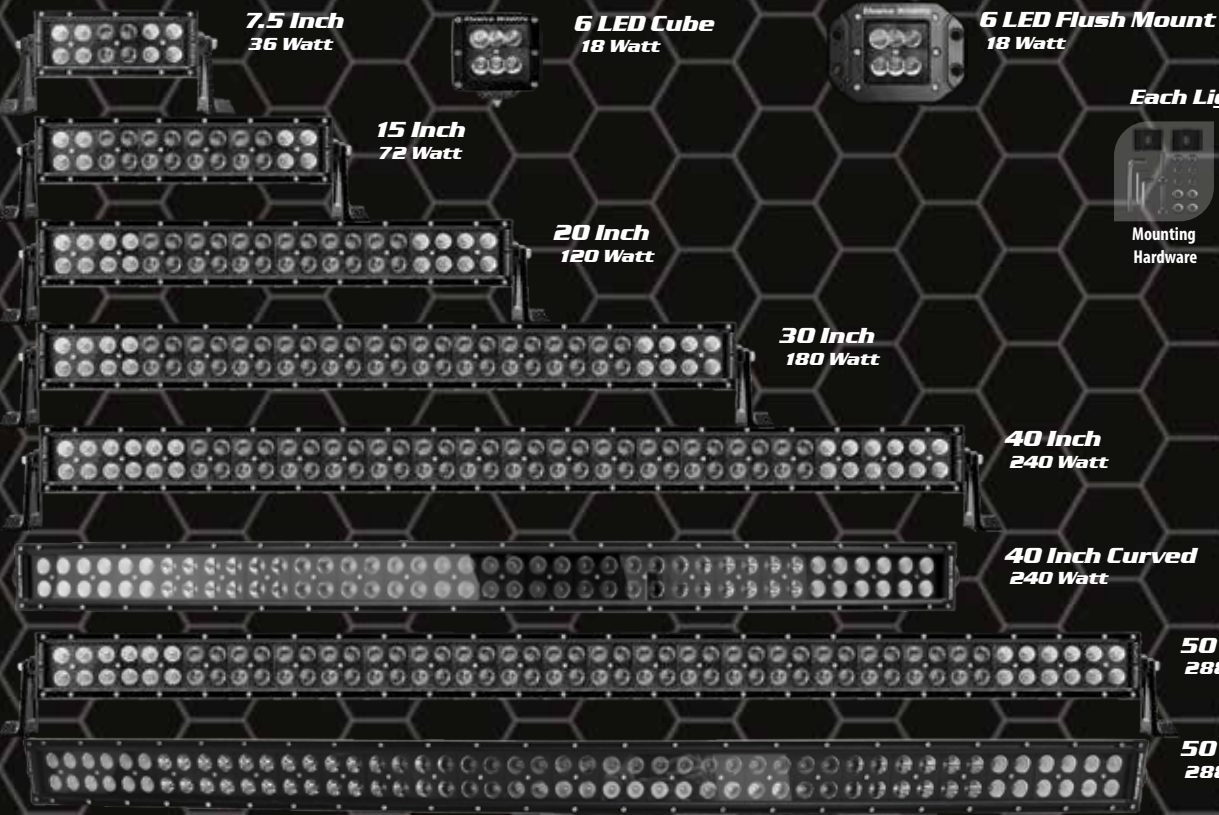
XLR 250HD Pro Bow Light Kit

The XLR 250HD Pro Bow Light system comes standard with the all new Piglet™ bow rail mount, light-to-rail ring mount, dual station smart charger with A/C and 12 volt vehicle adapter, 2 pack rechargeable batteries, quick connect tactical on/off and pressure switches, and Whisper Silent Dimmer™ switch. Available in 5 colors (red, green, white, blue, or infrared) or as a pro kit with red, green, and white.

250HD Bow Light Kit Single Color	\$219.99
250HD Bow Light Pro Kit	\$269.99
Piglet™ Single Bow Rail	\$29.99



Price and Availability Subject to Change



7.5 Inch
36 Watt

6 LED Cube
18 Watt

6 LED Flush Mount
18 Watt

15 Inch
72 Watt

20 Inch
120 Watt

30 Inch
180 Watt

40 Inch
240 Watt

40 Inch Curved
240 Watt

50 Inch
288 Watt

50 Inch Curved
288 Watt

Each Light Bar Includes:



Mounting Hardware



Mounting Brackets



10' Single Light Wiring Harness



IP68 Waterproof Sealed Connector



Waterproof Toggle Switch

Predator Series **BlackOut** LED Light Bar

The Predator Series BlackOut LED Light Bars are an improved version of our original light bar. The blacked out reflector face reduces unwanted glare and reflection when in the field. Along with the rugged construction and polycarbonate front lens, the weather proof seals will keep it going year after year. Utilizing the same tested and proven LED's used in our rifle lights, the Predator Series light bars give you the ultimate stealth when driving around your ranch or woods undetected.

Whether you are mounting them on your 4-wheeler, side-by-side, off road golf cart, personal truck, or utv, these are the lights you have been looking for.



Single Color Light Bar

Each size is available in 3 colors (red, green, or white).

6 LED Cube Light 18 Watt.....	\$89.99
6 LED Flush Mount Light 18 Watt	\$89.99
Single-Color 7.5"	\$119.99
Single-Color 15"	\$179.99
Single-Color 20"	\$239.99
Single-Color 30"	\$319.99
Single-Color 40"	\$349.99
Single-Color 40" Curved	\$399.99
Single-Color 50"	\$399.99
Single-Color 50" Curved	\$449.99

Change Colors
with the Press of a Button



One Light Bar Gives You Two Colors

Dual Color Light Bar

These lights have the ability to switch between colors with the press of a button. Each size is available in either Red/White or Green/White.

Dual-Color 7.5"	\$119.99
Dual-Color 15"	\$179.99
Dual-Color 20"	\$239.99
Dual-Color 30"	\$319.99
Dual-Color 40"	\$349.99
Dual-Color 40" Curved	\$399.99
Dual-Color 50"	\$399.99
Dual-Color 50" Curved	\$449.99

Optional Accessories

Dual Light Wiring Harness (20" & Smaller)	\$34.99
Dual Light Wiring Harness (30" & Larger)	\$34.99



Pig Oil™

Hogs have a complex hierarchical social structure that begins as young as one week old. A hog's sense of smell is among the strongest of all animals. They can smell odors 5-7 miles away and up to 25 feet underground. Odors play a huge role in their social structure. Hogs seek out strong and dominating odors. They wallow in these strong smells to help advance in their social standing.

After independent scientific studies across three continents, Pig Oil™ has emerged as the most powerful hog attractant known to man. It is so strong that hogs can smell just a few molecules of Pig Oil™ in over one billion molecules of air.

It is simple to attract hogs, just pour Pig Oil™ on a tree, rubbing post near your stand or hunting blind. Great as a trap lure. Hogs will come from miles around to rub on the tree or post. Hogs cannot resist the smell of Pig Oil™.

Pig Oil™ Original Scent\$24.99



Buck Oil™ Deer Attractant

Buck Oil™ is a highly attractive, palatable aroma that deer just can't resist! Easy to use, simply pour Buck Oil™ on corn, stumps, logs, virtually anything a deer may eat, lick, or rub on. Available in 16 ounce bottles.

Buck Oil™ Deer Attractant.....\$14.99





Swine Sauce™
Swine Sauce™ is available in three flavors, Extreme Strawberry, Day Old Donut, and Roasted Soybean & Peanut. Three distinct scents that hogs are sure to love. Use Swine Sauce™ by itself or add as a topper to your favorite bait or corn. Available in 32 ounce bottles.

- Swine Sauce™ Extreme Strawberry \$12.99
- Swine Sauce™ Roasted Soybean & Peanut..... \$12.99
- Swine Sauce™ Day Old Donut..... \$12.99

BOW TRAINER™

U.S. Patent #8,079,942



Bow Trainer™
Designed by an avid archer and certified physical therapist, the Bow Trainer™ is a unique training tool that can help archers obtain greater accuracy by improving their form and increasing their strength and stamina. Bow Trainer™ is the perfect training tool for archers of any age and level of experience, from novice to seasoned professional.

Bow Trainer™.....\$69.99

The Kill Light® XLR 250



We originally introduced the XLR 250 in 2007, and it changed the industry. Since then, it has been the standard from which all other lights have been judged. The XLR 250 made such an impact on the hunting industry that it is still one of the best selling lights, even after all these years. If you are looking for a heavy duty affordable long distance tactical light system for your rifle, look no further! This high powered light has an effective range of up to 250 yards at an unbelievably affordable price! Available in red, green, white, or blue. The charger base is compatible with REAKTOR™ Power Pack. Turn your hunting rifle into a night time killing machine!



XLR 250 Essential Gun Kit

The Kill Light® XLR 250 essential gun kit is available in your color of choice (red, green, white, blue, or infrared), as well as a high-output tactical white. Rifle kits come with one XLR 250 in the color of your choice, dual station smart charger with A/C and 12 volt vehicle adapter, two pack of lithium rechargeable batteries, and a rapid scope mount. Add a wired pressure or on/off switch if desired.

XLR 250 Essential Gun Kit	\$119.99
XLR 250 Scanning Light	\$79.99
Wired Pressure Switch	\$24.99
Wired On/Off Switch	\$24.99



XLR 250 Hog & Dog™ Essential Gun Kit

This is a double light kit. The Hog & Dog essential gun kit comes with one Red XLR 250 and one Green XLR 250, dual station smart charger with AC wall and 12 volt vehicle adapter, two pack of lithium rechargeable batteries capable of 4–6 hours of runtime per charge, and a rapid scope mount. Add a wired pressure or on/off switch if desired.

250 Hog & Dog™ Essential Gun Kit	\$179.99
Wired Pressure Switch	\$24.99
Wired On/Off Switch	\$24.99
EWT HD 2 Light Case	\$49.99
18650 Batt. 2600 mAh (2 pack)	\$29.99
18650 Batt. 3500 mAh (2 pack)	\$49.99

The Kill Light® Night Stick™ SHOOTING SYSTEM

- Precisely Adjust the Light Angle
Lean Forward to Lower the Light
Lean Back to Raise the Light
- Scan Without the Rifle
- Rapidly Acquire Target
- Very Stable Rest for the
Light and Rifle
- Adjustable Height for Best
Sitting or Kneeling Positions
- Remove the Rifle Rest and the
Night Stick™ Becomes a
Camera Monopod.



The Kill Light® Night Stick Shooting System

This system gives the night time predator hunter the utmost advantage in concealing themselves from the incoming predator by maximizing your ability to hide behind the light. With the ability to operate your light and rifle independently while providing maximum stability and control, the Night Shooting Stick System offers a level of control not seen in the night hunting industry until now.

- Aluminum construction.
- Adjustable from 17 to 37 inches.
- Light weight (13.5 oz)
- Silent Tech™ (rubberized) finish.
- Reduced Glare Carbon black in color.
- Built-in light safety stop.
- Designed for one inch light mounting hardware (1 inch scope ring).
- Foam insulated grip.
- 1/4" - 20 threaded for cameras.
- Great for terrain that isn't level.
- Light sold separately.

EWT Night Stick System.....\$19.99

Ultimate Predator Pack

HD4X Rifle Light + Pro 3 Color Headlamp

Mounts, Batteries, Deluxe Charger, Wired Switch, Ergo Grip, and Rifle Light Case

All-In-One Package

Ultimate HD Predator Pack

This is a two light kit. The Ultimate Predator Pack comes with the XLR HD4X rifle light, Pro 3 Color Head Lamp with Quiet Halo Shield, quick connect tactical ultra-quiet multi-function on/off pressure dimmer switch, deluxe four-bay rapid charger with A/C wall and 12 volt vehicle adapters, 4 pack of Tru-Max™ 2600 rechargeable batteries, adjustable windage & elevation mount, ring-to-rail mount, and the spotlight Ergo grip. HD4X is a long-range four color light that changes from white to red to green to infrared with the twist of a wrist.

Ultimate HD4X Predator Pack\$499.99

Optional Accessories

Additional Batteries Available:

Tru-Max™ 18650 Batt. 2600 mAh (2 pack)\$29.99
 Tru-Max™ 18650 Batt. 3500 mAh (2 pack)\$49.99
 Tru-Max™ 21700 Batt. 5000 mAh (2 pack)\$54.99

Deluxe 2-Bay Rapid Charger \$49.99
 Deluxe 4-Bay Rapid Charger \$69.99

EWT Night Stick System.....\$19.99



Price and Availability Subject to Change



XLR HD4X Spotlight

The XLR HD4X Spotlight Package comes with a Ergo Grip with flip-top ring mount, dual-station smart charger with A/C and 12 volt vehicle adapter, and 2 pack rechargeable batteries. HD4X is a long-range four color light that changes from white to red to green to infrared with the twist of a wrist.

HD4X Spotlight Kit\$349.99

Additional Batteries Available:

Tru-Max™ 18650 Batt. 2600 mAh (2 pack)\$29.99
 Tru-Max™ 18650 Batt. 3500 mAh (2 pack)\$49.99
 Tru-Max™ 21700 Batt. 5000 mAh (2 pack)\$54.99



Night Crusher™ Handheld Rechargeable Spotlight

The Night Crusher™ Rechargeable Spotlight is a long range bright white spot light. It includes wall charger, car charger, and a removable red lens cover.

Night Crusher Rechargeable Spotlight\$69.99





EWT Heavy Duty Case

The Elusive Wildlife Heavy Duty Case is military grade, and is airline friendly. This high quality roto-molded case is designed to protect your Kill Light® and accessories against even the most inhospitable environments. Key features include: waterproof and airtight; resistant to impact damage; molded-in hinge; heavy duty latch system; pressure equalization valve; and is resistant to ultra-violet light, solvents, corrosion, and fungus.

- EWT HD 1 Light Case\$49.99
- EWT HD 2 Light Case\$49.99
- EWT HD Case - Pick and Pluck Foam\$49.99



EWT Soft-Sided Case

Protect and organize your Kill Light® hunting light kit in our professional and durable soft sided case. EVA interior shell provides rigidity and protection while insuring the case holds form. Strong interior molded top and bottom panels are built to last and do not crack and break like cheap plastic cases you will find elsewhere. High density molded foam insert is custom cut for your Kill Light® and all included accessories. High quality look and feel you expect from Elusive Wildlife products.

- EWT Soft Case Standard Cut.....\$29.99
- EWT Soft Case Compact Cut (Piglet)\$34.99



Bow Stabilizer Light Mounts

The Piglet™ Double Bow Rail has a built in Damper™ along with a four inch picatinny rail on top and a two inch picatinny rail on the bottom. It will mount directly to the bow stabilizer receiver on the riser and gives you the ability to attach your favorite stabilizer back onto the bow.

The Piglet™ Single Bow Rail is not as tall as the double bow rail while still keeping the four inch picatinny rail on top. These bow rails are perfect for adding lights and other picatinny accessories to your bow.

- Piglet™ Double Bow Rail w/Damper\$49.99
- Piglet™ Single Bow Rail\$29.99



- A HD Windage and Elevation Mount\$29.99
- B HD Elite Locking Windage & Elevation.....\$49.99
- C Side Rail Mount 30mm\$19.99
- D Side Rail Mount 1 Inch.....\$19.99
- E Ring Mount Short.....\$12.99
- F Ring Mount Tall\$12.99
- G Velcro Shotgun Mount\$9.99
- H Bow Sight Mount / ATV Mount.....\$9.99
- I Magna Rail™\$99.99
- J Mini-Mag Magnetic Light Mount.....\$39.99
- K Rifle Barrel Mount, 1 Inch\$12.99
- L Headband for XLR 100 & XLR 250.....\$4.99
- M Rapid Mount 90 Degree.....\$21.99
- N Rapid Scope Mount\$14.99
- O 45° Offset Picatinny Rail Mount\$19.99
- P Ring to Rail Mount 30mm or 1 Inch.....\$19.99
- Q Kill Light® Video Shoe Mount\$29.99
- R ERGO Grip w/ Batt Storage.....\$24.99
- S ERGO Grip w/ Flip-Top Ring Mount.....\$39.99



High Quality Deer Feeder Control Boxes

Elusive Wildlife® High Quality Deer Feeder Control Boxes

Whether building a new feeder or replacing an old worn out or unreliable control box, the EWT High Quality Control Box is the perfect solution. The EWT control boxes start with a high quality painted or galvanized steel enclosure. Next we add a 3 watt cabled or attached solar panel. Then we add a 12 volt high-output 1/4 inch shaft size motor and stainless steel swing gate spinner plate. Finally we complete the package with the dependable THE TIMER™ brand controller.

- Durable Steel Construction
- Galvanized or Painted Finish
- High-Output Heavy Duty 12 Volt Motor
- Attached, Cabled, or No Solar Panel
- THE-TIMER™ Brand Controller
- Stainless Steel Swing Gate Spinner Plate



Need Individual Components or Complete Control Box



Add Optional Feeder Accessories

The Eliminator Spinner Plate

The-Eliminator is an extremely durable tamper-proof scatter plate that will prevent varmints from stealing feed.



Eliminator Rectangle\$39.99
 Eliminator Round\$39.99

The Remote™

Add a feeder remote to your control box to bring the game back within range. Activate THE REMOTE™ after the shot to sound the dinner bell and bring them back in range.



The Remote™\$99.99
 The Remote Pro™\$159.99

Rechargeable Battery

Need a rechargeable battery for your feeder that will last just a bit longer. The 12 volt 7Ah and 10Ah will easily fit into the control box for added capacity that will keep your feeder going longer.



12 Volt Battery 10 Amp Hours\$34.99
 12 Volt Battery 7 Amp Hours\$21.99

High Quality Deer Blind Windows

Every deer blind needs a quality set of windows to keep out the wind and rain. Whether you need replacement windows or you are building a blind from scratch, we have windows to fit your needs. The High Quality Deer Blind Windows are available in either metal framed glass panes or polymer framed with plexiglass panes. Standard sizes are designed to fit openings that are 11.5 inches tall and widths from 12 inches all the way to 48 inches wide. The metal framed sliders, metal framed deluxe hinged, and the polymer framed windows are all designed to be mounted on the outside of the blind. The metal framed hinged windows are mounted on the inside of the blind. All of the hinged windows can be mounted vertically or horizontally. Available in clear or tinted.



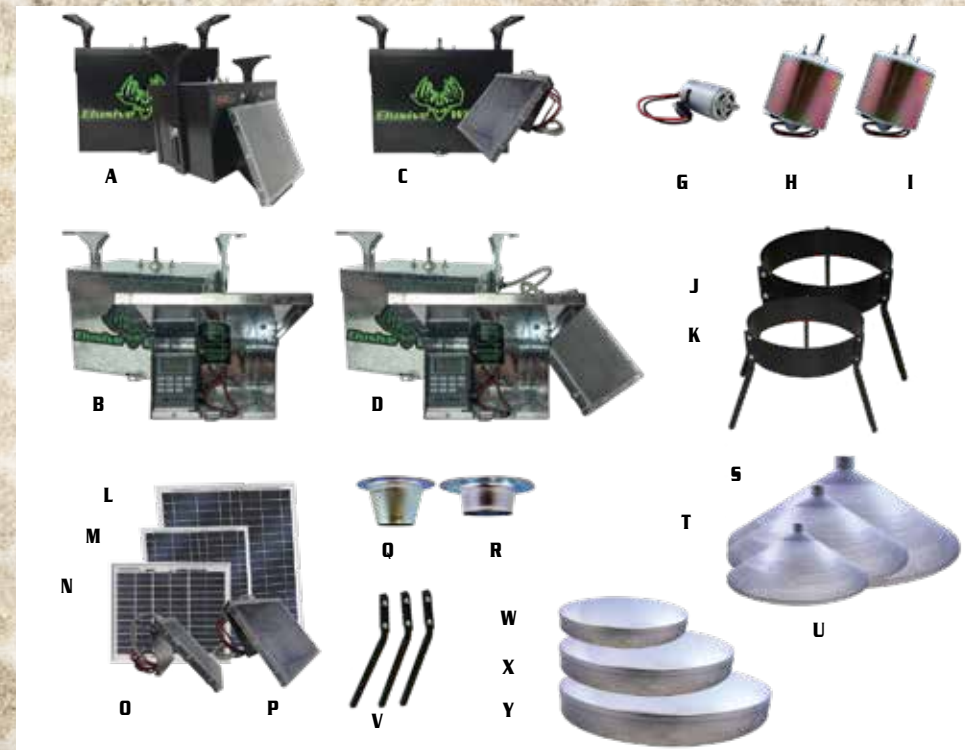
Sliders



Deluxe Hinged



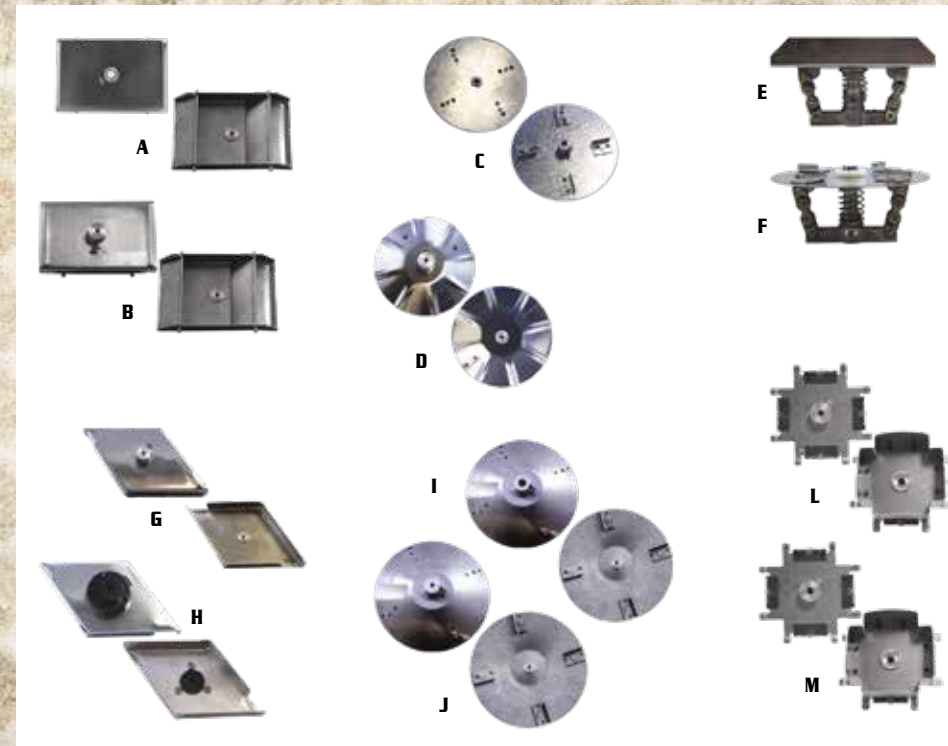
Hinged



A Control Box/Attached Solar Black.....	\$199.99
B Control Box/Attached Solar Galv.....	\$199.99
C Control Box/Cable Solar Black	\$199.99
D Control Box/Cable Solar Galv.....	\$199.99
E Control Box, Motor, & Swing Gate Black	\$69.99
F Control Box, Motor, & Swing Gate Galv	\$69.99
G Motor 6v/12v 1/8" Shaft	\$17.99
H HD Motor 6v 1/4" Shaft	\$34.99
I HD Motor 12v 1/4" Shaft	\$34.99
J Belly Band / 55 Gal Drum Med Duty	\$59.99
K Belly Band / 55 Gal Drum Hvy Duty.....	\$84.99
L 12v HD Solar Panel 20 Watt.....	\$129.99
M 12v HD Solar Panel 10 Watt.....	\$79.99
N 12v HD Solar Panel 5 Watt	\$54.99
O 6v Solar Panel & Bracket.....	\$39.99
P 12v Solar Panel & Bracket.....	\$49.99
Q Tall Mini Funnel.....	\$9.99
R 2 Inch Downspout Mini Funnel.....	\$9.99
S Galvanized Funnel / 85 Gal.....	\$119.99
T Galvanized Funnel / 55 Gal.....	\$69.99
U Galvanized Funnel / 30 Gal	\$59.99
V Bolt-On Leg Brackets	\$44.99
W Galvanized Lid / 30 Gal.....	\$54.99
X Galvanized Lid / 55 Gal	\$59.99
Y Galvanized Lid / 85 Gal	\$89.99



- A Feeder Sight Glass Flat\$9.99
- B Feeder Sight Glass Curved.....\$9.99
- C Varmint Cage Square\$34.99
- D Varmint Cage Round.....\$49.99
- E Feeder Hanger Bar 85 Gal.....\$39.99
- F Feeder Hanger Bar 55 Gal.....\$49.99
- G Feeder Hanger Bar 30 Gal\$59.99
- H Float Charger 12 Volt.....\$24.99
- I Float Charger 6 Volt.....\$24.99
- J Selectable Charger 6 Volt - 12 Volt.....\$24.99
- K Charge Controller 7 Amp 12v\$29.99
- L The Timer 12v or 6v\$64.99
- M The Timer Dual Stage 12v or 6v\$99.99
- N 12 Volt Battery 12 Amp Hours\$39.99
- O 12 Volt Battery 10 Amp Hours\$34.99
- P 12 Volt Battery 7 Amp Hours\$21.99
- Q 12 Volt Battery 1.3 Amp Hours\$15.99
- R 6 Volt Battery 5 Amp Hours\$15.99
- S 6 Volt Battery 5 Amp Hours\$17.99
- T 100 lbs Road Feeder Receiver Hitch.....\$99.99
- U 50 lbs Road Feeder Receiver Hitch\$99.99
- V Road Feeder Hand Control.....\$29.99
- W 100 lbs Road Feeder\$219.99
- X 50 lbs Road Feeder\$179.99
- Y Road Feeder Eliminator Kit\$129.99



- A Sing Gate Spinner 1/4" Hub\$14.99
- B Swing Gate Spinner 1/8" Hub.....\$14.99
- C Fish Spinner 1/8" Hub\$14.99
- D Ruffle Spinner 1/8"\$14.99
- E Eliminator Rectangle 1/4" Hub\$39.99
- F Eliminator Round 1/4" Hub\$39.99
- G Tornado Spinner 1/4" Hub.....\$14.99
- H Tornado Spinner 1/8" Hub.....\$14.99
- I 5 Inch Cupped Spinner 1/4" Hub\$14.99
- J 5 Inch Cupped Spinner 1/8" Hub.....\$14.99
- K 4 Inch Cupped Spinner 1/8" Hub\$14.99
- L Pro Spinner 1/4" Hub.....\$21.99
- M Pro Spinner 1/8" Hub.....\$21.99
- N Road Feeder Spinner Plate 1/4"\$14.99



EWT Window Decals

The EWT stickers are made from high quality, fade resistant, outdoor vinyl that is available in 31.5"x10.25" or 8.75"x3.25" sizes.

Large Truck Sticker\$29.99

Bumper Sticker.....\$1.99

Mouse Pad

The EWT mouse pad is a soft fabric mouse pad with non-skid heavy duty rubber back. It measures 7.625" X 9.25".

EWT Mouse Pad\$4.99

Collapsible Can Cooler

The EWT Can Cooler is made from durable 4mm Polyurethane Foam. It fits 12oz Cans.

EWT Collapsible Can Cooler\$1.99



EWT Hats

The EWT canvas hats are made from high-quality, fade resistant, heavy weight material. They feature a medium profile and hook and loop closure in the back.

Logo Hat (black & green).....\$9.99

Logo Hat (tan & black)\$9.99



EWT FLEXFIT® Hats

The EWT Fitted hats are Richardson™ FLEXFIT® that feature two-tone black and charcoal grey. The front panels are constructed of Richardson PULSE fabric with R-ACTIVE tech to help keep you cool and comfortable. Sportmesh back panels and contrast stitching give this cap a custom look. They are available in two sizes S/M and LG/XL.

Flex-Fit® Logo Hat, S-M\$29.99

Flex-Fit® Logo Hat, LG-XL\$29.99



EWT T-Shirts

EWT logo t-shirts are fade resistant, double-stitched, and pre-shrunk for true sizing. Available in sizes 2T, 3T, 4T, 5T, YS, YM, YL, S, M, L, XL, XXL, and XXXL.

Logo T-shirt Short Sleeve.....\$14.99

Logo T-shirt Long Sleeve.....\$14.99



EWT Fitted Crew T-Shirt

EWT fitted crew t-shirts are made from light-weight blended dry fit material. Made slim fitting for that athletic look. Available in sizes S, M, L, XL, XXL, and XXXL.

Fitted Crew T-shirt Green Imprint\$24.99

Fitted Crew Long Sleeve T-shirt\$24.99



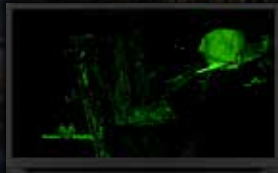
EWT Hoodie

EWT logo hoodies are made from heavy weight pre-shrunk cotton. They have green or pink imprint, and are available in sizes YL, S, M, L, XL, XXL, and XXXL.

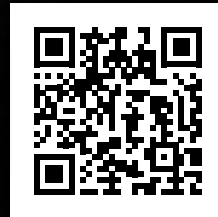
Logo Hoodie Green Imprint.....\$29.99



Elusive Wildlife
TELEVISION



Connect with us on social media.



www.ElusiveWildlife.com

Elusive Wildlife Technologies, LP • 1107 West Dallas Street, Suite A • Conroe, TX 77301

Prices and Availability Subject to Change